

Introduction

- The Purolator SERVA-cell™ High Temp is a high efficiency, extended surface, ASHRAE rated air filter.
- Its box filter construction eliminates the need for retainers and special external wire media supports.
- A high surface area to depth ratio provides the maximum amount of effective filter media in areas of minimum in-line duct space.
- Applications: Specifically built for conditions such as turbulent airflow and elevated operating temperatures up to 750°F.
- Average efficiency range: 65-95%
Average arrestance: 97-99%
- Recommended airflow rate: 500 FPM (625 FPM Max.)
- Available in seven filter face sizes (see chart on back), and two depth sizes—6", 12".

Media and Support

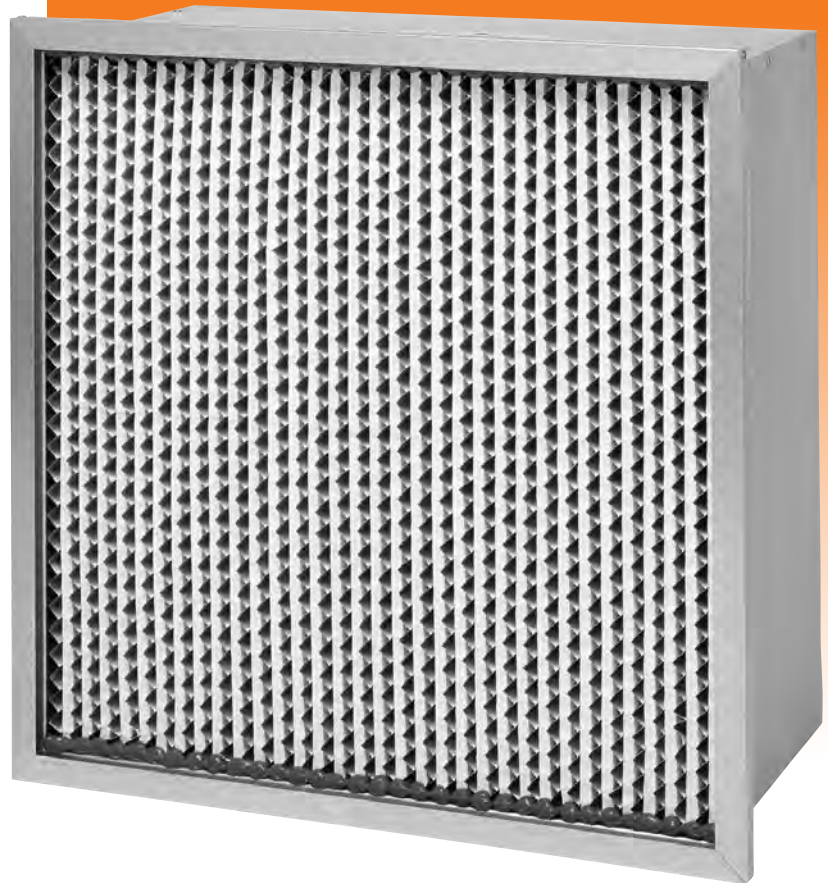
- Media: Continuous sheet of non-combustible, waterproof, microfiberglass.
- Pleat configuration: Radi-edge configuration promotes maximum exposure of media surface area to airflow.
- Pleat support: Pleated around radi-edge, corrugated aluminum separators. All filter packs to be woven on an automatic weaving machine.
- Media area/square foot: See Performance data chart on back.

Construction Features

- Frame: All metal, corrosion resistant, aluminized steel casing—available with a single header. An expanded metal grid is attached upstream and downstream providing additional pack support within the frame.
- The media pack is secured to the four inner surfaces of the frame with a microfiberglass blanket.
- Available with a single-channel unitized header.
- Tested in accordance with U.L. Standard 900 and ASHRAE 52.1-1992 and ASHRAE 52.2-1999, Class 1.
- Recommended operating temperature: max. 750°F.

Suggested Product Specifications

1. The filter shall be the SERVA-cell™ High Temp as manufactured by Purolator Air Filtration.
2. Air filters shall be the rigid-cell air filter type engineered to provide medium and high efficiency filtration combined with a prolonged life cycle.
3. The filter media shall consist of a continuous sheet of non-combustible, waterproof, microfiberglass media pleated around radi-edge, corrugated aluminum separators. These separators shall



fully support the media while exposing its maximum surface area to airflow.

4. The radial configuration shall keep the separators from puncturing the media.
5. When tested in accordance with ASHRAE Test Std. 52.1-1992 and ASHRAE 52.2 the filter media shall have an average efficiency of 65-95% and an arrestance of not less than 97-99%.
6. The filter pack shall be enclosed in an all-metal, corrosion-resistant, aluminized steel casing protecting the filter from shipping damage and allowing it to withstand high-temperature service conditions up to 750°F.
7. The pack shall be secured to four inner surfaces of the metal frame to prevent air bypass.
8. The enclosure frame shall be constructed of corrosion resistant aluminized steel in such a manner as to produce a rigid durable filter. An aluminized expanded metal grid shall be secured to internal frame, improving pack stability within the enclosing frame.
9. To eliminate air bypass, each 24 x 24 single header model frame shall be roll formed continuously from the enclosure frame material.
10. Filters shall be listed and rated by Underwriters Laboratories, Inc. as Class I.

SERVA-CELL® HighTemp

Extended Surface ASHRAE-Rated Filter

Performance Data: SERVA-CELL 65/85/95

Series	Nominal size W x H x D	Actual Size W x H x D*	SERVA-CELL Model number	Rated capacity CFM	Initial resistance inches w.g.	Media area/ Sq. ft.	Filter weight lbs.	
65	24 x 24 x 12	23 $\frac{3}{8}$ x 23 $\frac{3}{8}$	SL65H7-4412	2000	.45	105	18.0	
	20 x 25 x 12	19 $\frac{3}{8}$ x 24 $\frac{3}{8}$	SL65H7-0512	1750	.45	90	17.0	
	20 x 24 x 12	19 $\frac{3}{8}$ x 23 $\frac{3}{8}$	SL65H7-0412	1650	.45	86	16.5	
	20 x 20 x 12	19 $\frac{3}{8}$ x 19 $\frac{3}{8}$	SL65H7-0012	1400	.45	70	13.5	
	16 x 25 x 12	15 $\frac{3}{8}$ x 24 $\frac{3}{8}$	SL65H7-6512	1400	.45	70	13.5	
	16 x 20 x 12	15 $\frac{3}{8}$ x 19 $\frac{3}{8}$	SL65H7-6012	1100	.45	56	11.0	
	12 x 24 x 12	11 $\frac{3}{8}$ x 23 $\frac{3}{8}$	SL65H7-2412	1000	.45	48	20.0	
	24 x 24 x 6	23 $\frac{3}{8}$ x 23 $\frac{3}{8}$	SL65H7-4406	1000	.15	55	11.5	
	20 x 25 x 6	19 $\frac{3}{8}$ x 24 $\frac{3}{8}$	SL65H7-0506	875	.15	47	10.5	
	20 x 24 x 6	19 $\frac{3}{8}$ x 23 $\frac{3}{8}$	SL65H7-0406	825	.15	45	10.0	
	20 x 20 x 6	19 $\frac{3}{8}$ x 19 $\frac{3}{8}$	SL65H7-0006	700	.15	37	8.0	
	16 x 25 x 6	15 $\frac{3}{8}$ x 24 $\frac{3}{8}$	SL65H7-6506	700	.15	37	8.0	
	16 x 20 x 6	15 $\frac{3}{8}$ x 19 $\frac{3}{8}$	SL65H7-6006	550	.15	29	6.5	
	12 x 24 x 6	11 $\frac{3}{8}$ x 23 $\frac{3}{8}$	SL65H7-2406	500	.15	25	13.0	
	85	24 x 24 x 12	23 $\frac{3}{8}$ x 23 $\frac{3}{8}$	SL85H7-4412	2000	.60	105	18.0
		20 x 25 x 12	19 $\frac{3}{8}$ x 24 $\frac{3}{8}$	SL85H7-0512	1750	.60	90	17.0
		20 x 24 x 12	19 $\frac{3}{8}$ x 23 $\frac{3}{8}$	SL85H7-0412	1650	.60	86	16.5
		20 x 20 x 12	19 $\frac{3}{8}$ x 19 $\frac{3}{8}$	SL85H7-0012	1400	.60	70	13.5
16 x 25 x 12		15 $\frac{3}{8}$ x 24 $\frac{3}{8}$	SL85H7-6512	1400	.60	70	13.5	
16 x 20 x 12		15 $\frac{3}{8}$ x 19 $\frac{3}{8}$	SL85H7-6012	1100	.60	56	11.0	
12 x 24 x 12		11 $\frac{3}{8}$ x 23 $\frac{3}{8}$	SL85H7-2412	1000	.60	48	20.0	
24 x 24 x 6		23 $\frac{3}{8}$ x 23 $\frac{3}{8}$	SL85H7-4406	1000	.30	55	11.5	
20 x 25 x 6		19 $\frac{3}{8}$ x 24 $\frac{3}{8}$	SL85H7-0506	875	.30	47	10.5	
20 x 24 x 6		19 $\frac{3}{8}$ x 23 $\frac{3}{8}$	SL85H7-0406	825	.30	45	10.0	
20 x 20 x 6		19 $\frac{3}{8}$ x 19 $\frac{3}{8}$	SL85H7-0006	700	.30	37	8.0	
16 x 25 x 6		15 $\frac{3}{8}$ x 24 $\frac{3}{8}$	SL85H7-6506	700	.30	37	8.0	
16 x 20 x 6		15 $\frac{3}{8}$ x 19 $\frac{3}{8}$	SL85H7-6006	550	.30	29	6.5	
12 x 24 x 6		11 $\frac{3}{8}$ x 23 $\frac{3}{8}$	SL85H7-2406	500	.30	25	13.0	
95		24 x 24 x 12	23 $\frac{3}{8}$ x 23 $\frac{3}{8}$	SL95H7-4412	2000	.65	125	22.0
		20 x 25 x 12	19 $\frac{3}{8}$ x 24 $\frac{3}{8}$	SL95H7-0512	1750	.65	108	20.9
		20 x 24 x 12	19 $\frac{3}{8}$ x 23 $\frac{3}{8}$	SL95H7-0412	1650	.65	103	20.9
		20 x 20 x 12	19 $\frac{3}{8}$ x 19 $\frac{3}{8}$	SL95H7-0012	1400	.65	84	19.8
	16 x 25 x 12	15 $\frac{3}{8}$ x 24 $\frac{3}{8}$	SL95H7-6512	1400	.65	84	19.8	
	16 x 20 x 12	15 $\frac{3}{8}$ x 19 $\frac{3}{8}$	SL95H7-6012	1100	.65	66	17.6	
	12 x 24 x 12	11 $\frac{3}{8}$ x 23 $\frac{3}{8}$	SL95H7-2412	1000	.65	58	20.0	
	24 x 24 x 6	23 $\frac{3}{8}$ x 23 $\frac{3}{8}$	SL95H7-4406	1000	.35	64	12.6	
	20 x 25 x 6	19 $\frac{3}{8}$ x 24 $\frac{3}{8}$	SL95H7-0506	875	.35	55	11.6	
	20 x 24 x 6	19 $\frac{3}{8}$ x 23 $\frac{3}{8}$	SL95H7-0406	825	.35	53	11.6	
	20 x 20 x 6	19 $\frac{3}{8}$ x 19 $\frac{3}{8}$	SL95H7-0006	700	.35	43	11.0	
	16 x 25 x 6	15 $\frac{3}{8}$ x 24 $\frac{3}{8}$	SL95H7-6506	700	.35	43	11.0	
	16 x 20 x 6	15 $\frac{3}{8}$ x 19 $\frac{3}{8}$	SL95H7-6006	550	.35	34	10.5	
	12 x 24 x 6	11 $\frac{3}{8}$ x 23 $\frac{3}{8}$	SL95H7-2406	500	.35	30	13.0	

* Actual Depth Dimension: Nominal depth 12" = Actual depth 11 $\frac{1}{2}$ "; Nominal depth 6" = Actual depth 5 $\frac{1}{2}$ "

Purolator
a CLARCOR company

www.purolatorair.com



CLARCOR Air Filtration Products
P. O. Box 32578 • Louisville, KY 40232
Customer Service Team: 1-866-925-2247 • Fax: 1-800-784-3458
Email: info@purolatorair.com • www.purolatorair.com

P-SERVAHIGH-607

Distributed by:



ADVANCED FILTRATION CONCEPTS
PHONE: 323.832.8316, x12 FAX: 323.832.8318
www.ADVfiltration.com

© 2007 CLARCOR Air Filtration Products.
CLARCOR Air Filtration Products and its subsidiaries reserve the right to
development and reserves the right to change design and specifications without notice.